



MCN gram

2021 Survey
Ulcerative Colitis
(Sample version)

Paid data are delivered in PDF and Excel tabulation data formats.

	Listed Segments	Remarks
• Summary of number of patients	HP/GP specialty	※ Paid basic package
• Share of number of patients/physicians in specialty	HP/GP specialty	
• Percentage of practicing physicians and the average number of patients [by specialty]	HP/GP specialty	
• Distribution of number of patients [by specialty]	HP/GP specialty	
• Percentage of practicing physicians (cumulative ratio)	HP/GP specialty	
• Share of patients (cumulative ratio)	HP/GP specialty	
• Relationship between the total number of patients treated and disease	1 segment	※ One pattern is included in the basic package. ※ Other specialties are optional.
• Relationship between the number of patients treated and the number of patients with disease	1 segment	
• Target disease x other diseases: Distribution of number of patients	1 segment	※ One pattern is included in the basic package. ※ Combinations with other diseases and specialties are optional.
• Target disease x other diseases: Distribution of number of patients (scatter diagram)	1 segment	
• Percentage of treated/potential patients calculated from the disease monitor	Gender and age	※ Paid basic package ※ Listed in a survey using both "MCN gram" and "Disease Monitor" data
• Number of treated/potential patients calculated from the disease monitor (weighted tabulation)	Age	

Name of database	MCN gram
Overview	The number of patients treated with disease and procedure/surgery (number of cases performed) were obtained from physicians across Japan: 173 target diseases and 24 types of procedures/surgeries.
Research method	Web survey
Geographic area	Across Japan
Target population	Physicians of all specialties
Number of responding physicians	15,455 physicians (HP: 12,481, GP: : 2,947) *HP: facilities with ≥ 20 beds, GP: facilities with ≤ 19 beds.
Research panel	CareNet.com member physicians
Survey date	Monday, June 21 - Friday, July 9, 2021
Survey administrator	Macromill Carenet, Inc.
Contents of survey	<ul style="list-style-type: none"> • Total number of patients treated • Number of patients treated • Number of procedures and surgeries performed • Physicians' attitudes (what physicians want to achieve in the future) • Medical specialty qualifications • Attributes (e.g., age, facility location)

Name of database	Disease monitor (Patient survey)
Overview	Awareness of diseases/symptoms and patient visit were identified in the target general population. The targets were 183 diseases/symptoms in the 2021 survey and 177 diseases/ symptoms in the 2022 survey.
Research method	Web Survey
Geographic area	Across Japan
Target population	General population (men and women aged 15-89)
Number of respondents	The 2021 survey: 618,668 The 2022 survey: 666,309
Research panel	Survey monitors of Macromill and its partners
Survey date	FY2021 survey: Monday, February 22, 2021 – Monday, March 8, 2021 FY2022 survey: Thursday, February 17, 2022 – Thursday, March 3, 2022
Survey administrator	Macromill, Inc.
Contents of survey	<ul style="list-style-type: none"> • Awareness of diseases and symptoms • Doctor visit for diseases/symptoms (own and family) • Stage of cancer and treatment • Biologics used for immunological and allergic diseases • Dental visit • Attributes (monitor registry information)

[Ulcerative Colitis] Summary of Number of Patients

The estimated weighted number of patients in Japan is calculated from the results of "MCN gram" and "Disease Monitor" by multiplying the number of physicians and weighted population in Japan.

The number of patients in "Disease Monitor" (patient survey) is included when both "MCN gram" and "Disease Monitor" data are used.

Calculation procedure

[MCN gram (Physician survey)]

Number of patients treated in Japan (weighted tabulation): Calculated from the average number of patients in each specialty in "MCN gram" x the number of physicians in Japan (Ministry of Health, Labor and Welfare).

Number of patients by prefecture: The ratio of the number of patients by prefecture is calculated from the average number of patients in each specialty in "MCN gram" by prefecture x number of physicians in Japan by prefecture (Ministry of Health, Labor and Welfare), and the number of patients by prefecture is calculated by multiplying the ratio using the above "number of patients treated in Japan (weighted tabulation)" as population parameter.

Share of patients (by specialty): Calculated from the ratio of the weighted number of patients in each specialty to the "number of patients treated in Japan (weighted tabulation)".

[Disease Monitor (Patient survey)]

Calculated from the percentage of responses by sex and age multiplied by weighted population.

Number of patients in Japan (weighted tabulation)

*Calculated from "MCN gram" (Physician survey)

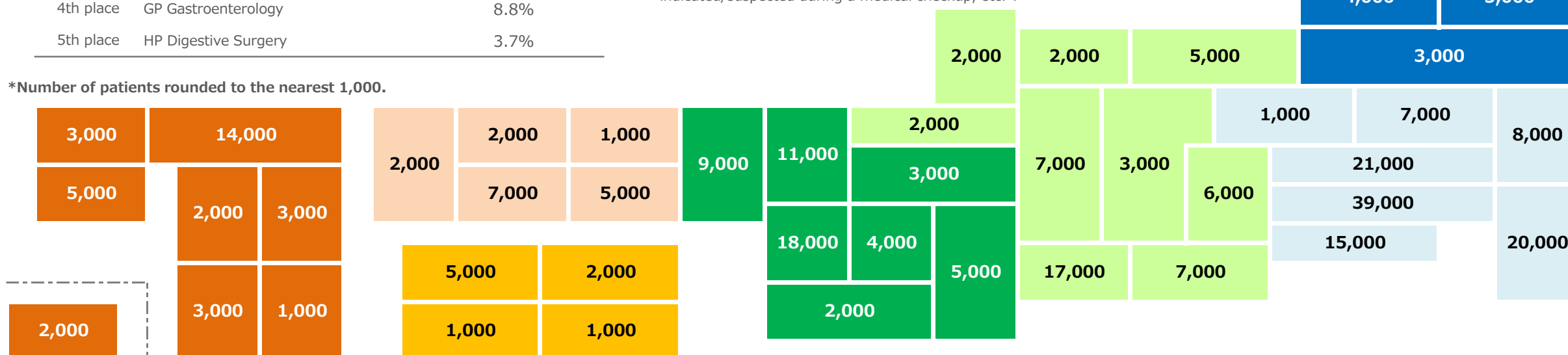
Total		
Number of patients treated in Japan (weighted tabulation)		
304,000 patients		
Share of patients (by specialty)		
1st place	HP Gastroenterology	41.2%
2nd place	GP Internal Medicine	20.5%
3rd place	HP Internal Medicine	10.2%
4th place	GP Gastroenterology	8.8%
5th place	HP Digestive Surgery	3.7%

*Number of patients rounded to the nearest 1,000.

Calculated from "Disease Monitor" (Patient survey)

Tabulation	
Number of patients in Japan (treated in the past year)	338,000 patients
Number of potential patients (untreated)	198,000 patients

- ※ Number of domestic patients (treated in the last 1 year) is the sum of "currently seeing and treating a medical institution" and "had seen and treated a medical institution within 1 year".
- ※ The number of potential patients (untreated) is the number of respondents who "have not yet visited a medical institution, although it was indicated/suspected during a medical checkup, etc.".



[Ulcerative Colitis] Share of Number of Patients/Physicians by Specialty

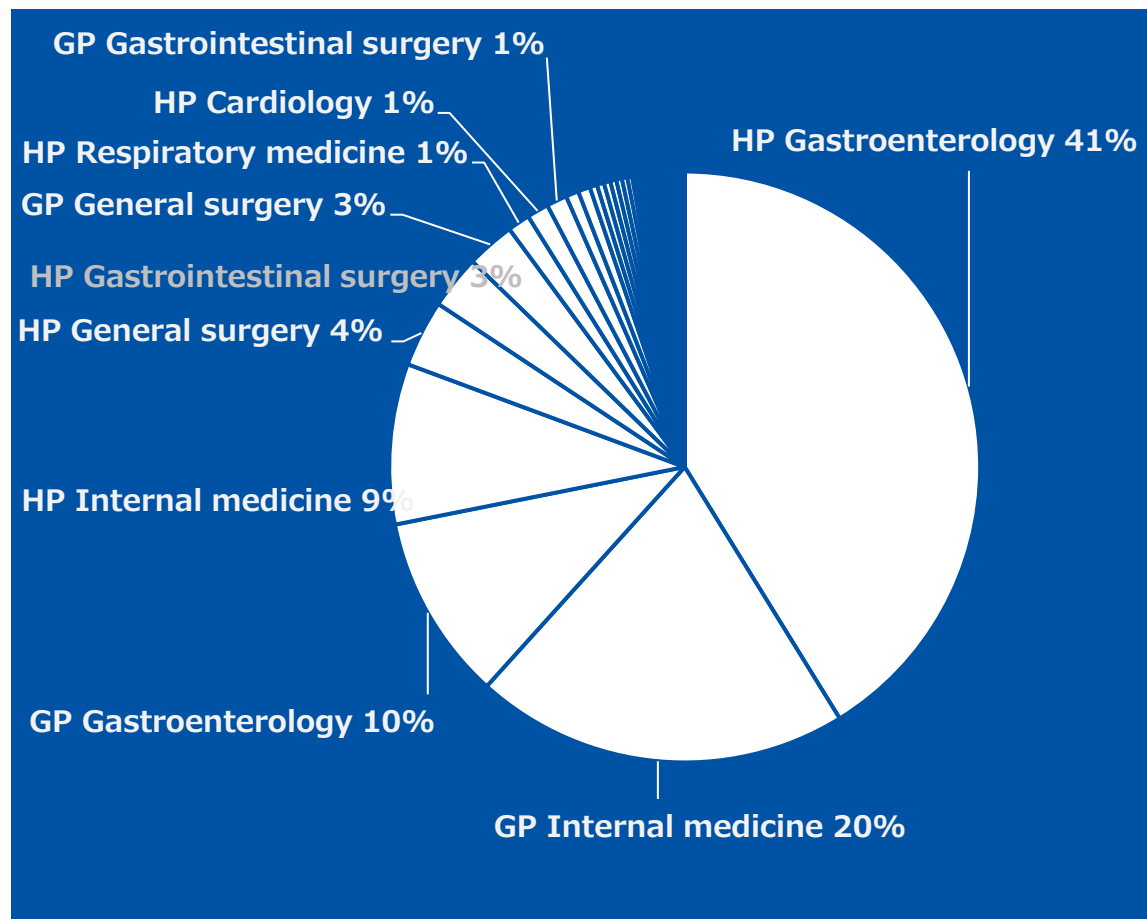
The charts show the share of the number of patients in each specialty based on the average number of patients by "HP/GP specialty" in "MCN gram" and the share of the number of physicians in each specialty based on the percentage of physicians in each specialty by "HP/GP specialty."

Calculation procedure

Share of number of patients (weighted tabulation): Calculated from the ratio of the weighted number of patients in each specialty to the "number of patients treated in Japan (weighted tabulation)."

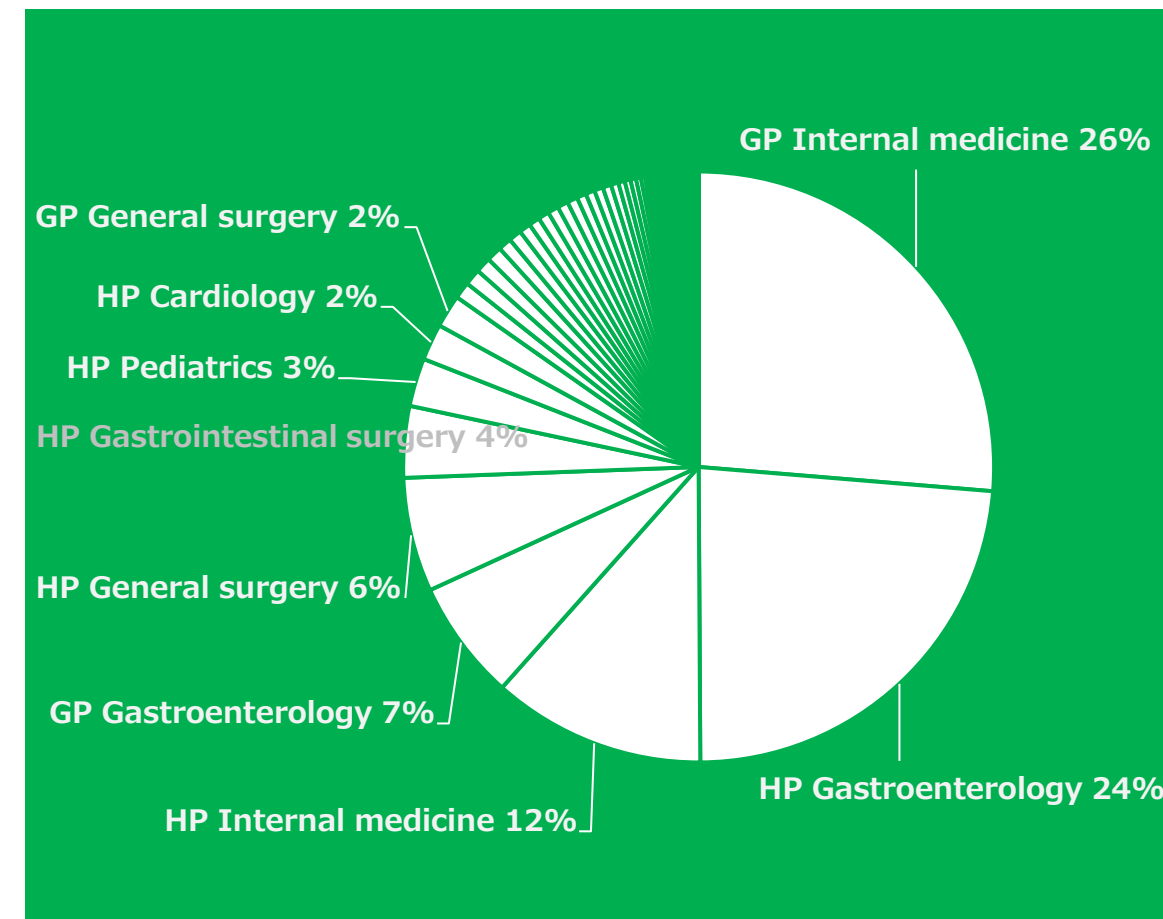
Share of number of physicians (weighted tabulation): Weighted tabulation of practicing physicians in Japan is calculated from the percentage of physicians treating ≥ 1 patient in each specialty multiplied by the number of physicians in Japan (Ministry of Health, Labor and Welfare), and the share of the number of physicians is calculated from the ratio of the number of practicing physicians in each specialty (weighted tabulation) to the total number of practicing physicians.

Share of number of patients (weighted tabulation)



*Specialties with less than 1% of the total number of patients are omitted.

Share of number of physicians (weighted tabulation)



*Specialties with less than 1% of the total number of patients are omitted.

[Ulcerative Colitis] Percentage of Practicing Physicians and Average Number of Patients [by Specialty]

The tables show the percentage of practicing physicians, the average number of patients per physician, and the share of the number of patients for each HP/GP specialty.

Calculation procedure

Share of number of patients (weighted tabulation):

Calculated from the ratio of the weighted number of patients in each specialty to the "number of patients treated in Japan (weighted tabulation)."

	n=	Percentage of physicians	Average		Standard Deviation	Share in # of patients
HP All	n=12481	9.9%	0.9	Person/year	6.1	
HP Internal medicine	n=1243	17.9%	1.2	Person/year	4.5	8.8%
HP Cardiology	n=696	6.2%	0.3	Person/year	2.3	1.2%
HP nephrology	n=301	6.6%	0.2	Person/year	1.0	0.3%
HP Gastroenterology	n=707	67.3%	10.6	Person/year	19.9	41.2%
HP Respiratory medicine	n=477	3.4%	0.6	Person/year	10.4	1.2%
HP Diabetes, Metabolism and Endocrinology	n=405	5.4%	0.3	Person/year	2.2	0.4%
HP Infectious disease medicine	n=37	8.1%	0.4	Person/year	1.7	0.1%
HP Rheumatology	n=156	12.2%	0.4	Person/year	1.4	0.2%
HP Allergology	n=8	12.5%	0.5	Person/year	1.4	0.0%
HP Hematology	n=210	6.2%	0.1	Person/year	0.6	0.1%
HP Neurology	n=402	5.5%	0.2	Person/year	1.3	0.3%
HP Psychiatry	n=727	1.4%	0.0	Person/year	0.5	0.2%
HP Psychosomatic medicine	n=16	18.8%	0.4	Person/year	1.1	0.0%
HP General medicine	n=97	13.4%	0.5	Person/year	1.8	0.0%
HP Emergency	n=202	5.4%	0.1	Person/year	0.8	0.2%
HP General surgery	n=405	20.0%	1.1	Person/year	4.6	3.7%
HP Cardiovascular surgery	n=144	0.7%	0.1	Person/year	0.8	0.1%
HP Gastrointestinal surgery	n=486	22.4%	1.5	Person/year	5.1	2.9%
HP Respiratory surgery	n=150	1.3%	0.0	Person/year	0.3	0.0%
HP Breast surgery	n=90	2.2%	0.0	Person/year	0.3	0.0%
HP Neurosurgery	n=398	2.5%	0.2	Person/year	2.8	0.4%
HP Orthopedic surgery	n=798	1.1%	0.0	Person/year	0.5	0.2%
HP Rehabilitation	n=115	4.3%	0.1	Person/year	0.4	0.1%
HP Pediatrics	n=671	7.5%	0.2	Person/year	1.1	0.7%
HP Obstetrics and gynecology	n=281	2.8%	0.1	Person/year	1.3	0.3%
HP Urology	n=386	0.3%	0.0	Person/year	0.2	0.0%
HP Dermatology	n=274	1.1%	0.0	Person/year	0.3	0.0%
HP Plastic and reconstructive surgery	n=97	0.0%	0.0	Person/year	0.0	0.0%
HP Otorhinolaryngology	n=215	1.4%	0.0	Person/year	0.3	0.1%
HP Ophthalmology	n=244	1.2%	0.0	Person/year	0.2	0.0%
HP Anesthesiology	n=478	2.1%	0.0	Person/year	0.3	0.1%
HP Radiology	n=294	1.4%	0.1	Person/year	0.5	0.1%
HP Medical oncology	n=55	12.7%	2.1	Person/year	7.5	0.4%
HP Clinical pathology	n=60	6.7%	0.4	Person/year	2.0	0.3%
HP Clinical resident	n=1003	1.7%	0.0	Person/year	0.4	0.2%
HP Others	n=153	3.9%	0.1	Person/year	1.0	0.2%

	n=	Percentage of physicians	Average		Standard Deviation	Share in # of patients
GP All	n=2974	13.0%	1.1	Person/year	6.4	
GP Internal medicine	n=936	22.4%	1.6	Person/year	6.6	20.5%
GP Cardiology	n=134	14.2%	0.9	Person/year	3.8	0.7%
GP nephrology	n=70	10.0%	0.6	Person/year	2.4	0.2%
GP Gastroenterology	n=156	61.5%	8.6	Person/year	20.1	10.2%
GP Respiratory medicine	n=61	4.9%	0.0	Person/year	0.2	0.0%
GP Diabetes, Metabolism and Endocrinology	n=86	7.0%	0.3	Person/year	1.3	0.1%
GP Infectious disease medicine	n=2	0.0%	0.0	Person/year	0.0	0.0%
GP Rheumatology	n=22	13.6%	0.3	Person/year	0.8	0.0%
GP Allergology	n=4	0.0%	0.0	Person/year	0.0	0.0%
GP Hematology	n=4	0.0%	0.0	Person/year	0.0	0.0%
GP Neurology	n=34	11.8%	0.4	Person/year	1.7	0.1%
GP Psychiatry	n=181	1.7%	0.1	Person/year	0.6	0.1%
GP Psychosomatic medicine	n=14	7.1%	0.9	Person/year	3.2	0.2%
GP General medicine	n=36	27.8%	0.6	Person/year	1.2	0.0%
GP Emergency	n=13	7.7%	1.5	Person/year	5.5	0.0%
GP General surgery	n=44	22.7%	3.0	Person/year	8.8	2.6%
GP Cardiovascular surgery	n=7	0.0%	0.0	Person/year	0.0	0.0%
GP Gastrointestinal surgery	n=15	40.0%	6.9	Person/year	14.5	1.1%
GP Respiratory surgery	n=2	0.0%	0.0	Person/year	0.0	0.0%
GP Breast surgery	n=13	0.0%	0.0	Person/year	0.0	0.0%
GP Neurosurgery	n=24	0.0%	0.0	Person/year	0.0	0.0%
GP Orthopaedic surgery	n=158	1.3%	0.0	Person/year	0.2	0.1%
GP Rehabilitation	n=7	14.3%	0.4	Person/year	1.1	0.0%
GP Pediatrics	n=180	0.6%	0.0	Person/year	0.1	0.0%
GP Obstetrics and gynecology	n=92	1.1%	0.0	Person/year	0.2	0.0%
GP Urology	n=70	1.4%	0.0	Person/year	0.1	0.0%
GP Dermatology	n=168	0.6%	0.0	Person/year	0.2	0.0%
GP Plastic and reconstructive surgery	n=37	0.0%	0.0	Person/year	0.0	0.0%
GP Otorhinolaryngology	n=110	0.0%	0.0	Person/year	0.0	0.0%
GP Ophthalmology	n=140	0.0%	0.0	Person/year	0.0	0.0%
GP Anesthesiology	n=31	0.0%	0.0	Person/year	0.0	0.0%
GP Radiology	n=19	0.0%	0.0	Person/year	0.0	0.0%
GP Medical oncology	n=1	0.0%	0.0	Person/year	-	0.0%
GP Clinical pathology	n=1	0.0%	0.0	Person/year	-	0.0%
GP Clinical resident	n=42	2.4%	0.1	Person/year	0.5	0.0%
GP Others	n=60	1.7%	0.0	Person/year	0.1	0.0%

[Ulcerative Colitis] Distribution of Number of Patients [by Specialty]

The tables show the percentage of physicians by the number of patients treated for each HP/GP specialty.

What the number table represents:

The percentage of physicians treating the corresponding number of patients in each HP/GP specialty is calculated.

*The percentage of "HP all" and "GP all" are the unweighted number of physicians in the population.

	n=	0	1~4	5~9	10~14	15~19	20~24	25~29	30~49	more than 50
HP All	n=12481	90%	5%	2%	1%	0%	1%	0%	1%	0%
HP Internal medicine	n=1243	82%	10%	3%	2%	1%	1%	0%	1%	0%
HP Cardiology	n=696	94%	3%	2%	1%	0%	0%	0%	0%	0%
HP nephrology	n=301	93%	5%	1%	0%	0%	0%	0%	0%	0%
HP Gastroenterology	n=707	33%	17%	17%	10%	6%	6%	1%	7%	4%
HP Respiratory medicine	n=477	97%	3%	0%	0%	0%	0%	0%	0%	0%
HP Diabetes, Metabolism and Endocrinology	n=405	95%	3%	2%	0%	0%	0%	0%	0%	0%
HP Infectious disease medicine	n=37	92%	5%	0%	3%	0%	0%	0%	0%	0%
HP Rheumatology	n=156	88%	10%	2%	1%	0%	0%	0%	0%	0%
HP Allergology	n=8	88%	13%	0%	0%	0%	0%	0%	0%	0%
HP Hematology	n=210	94%	5%	1%	0%	0%	0%	0%	0%	0%
HP Neurology	n=402	95%	4%	0%	0%	0%	0%	0%	0%	0%
HP Psychiatry	n=727	99%	1%	0%	0%	0%	0%	0%	0%	0%
HP Psychosomatic medicine	n=16	81%	19%	0%	0%	0%	0%	0%	0%	0%
HP General medicine	n=97	87%	10%	1%	2%	0%	0%	0%	0%	0%
HP Emergency	n=202	95%	5%	0%	0%	0%	0%	0%	0%	0%
HP General surgery	n=405	80%	13%	5%	1%	0%	1%	0%	0%	0%
HP Cardiovascular surgery	n=144	99%	0%	0%	1%	0%	0%	0%	0%	0%
HP Gastrointestinal surgery	n=486	78%	12%	5%	2%	1%	0%	1%	0%	0%
HP Respiratory surgery	n=150	99%	1%	0%	0%	0%	0%	0%	0%	0%
HP Breast surgery	n=90	98%	2%	0%	0%	0%	0%	0%	0%	0%
HP Neurosurgery	n=398	97%	2%	0%	0%	0%	0%	0%	0%	0%
HP Orthopedic surgery	n=798	99%	1%	0%	0%	0%	0%	0%	0%	0%
HP Rehabilitation	n=115	96%	4%	0%	0%	0%	0%	0%	0%	0%
HP Pediatrics	n=671	93%	6%	1%	0%	0%	0%	0%	0%	0%
HP Obstetrics and gynecology	n=281	97%	2%	0%	0%	0%	0%	0%	0%	0%
HP Urology	n=386	100%	0%	0%	0%	0%	0%	0%	0%	0%
HP Dermatology	n=274	99%	1%	0%	0%	0%	0%	0%	0%	0%
HP Plastic and reconstructive surgery	n=97	100%	0%	0%	0%	0%	0%	0%	0%	0%
HP Otorhinolaryngology	n=215	99%	1%	0%	0%	0%	0%	0%	0%	0%
HP Ophthalmology	n=244	99%	1%	0%	0%	0%	0%	0%	0%	0%
HP Anesthesiology	n=478	98%	2%	0%	0%	0%	0%	0%	0%	0%
HP Radiology	n=294	99%	1%	1%	0%	0%	0%	0%	0%	0%
HP Medical oncology	n=55	87%	4%	2%	2%	0%	0%	0%	5%	0%
HP Clinical pathology	n=60	93%	5%	0%	0%	2%	0%	0%	0%	0%
HP Clinical resident	n=1003	98%	1%	0%	0%	0%	0%	0%	0%	0%
HP Others	n=153	96%	3%	0%	1%	0%	0%	0%	0%	0%

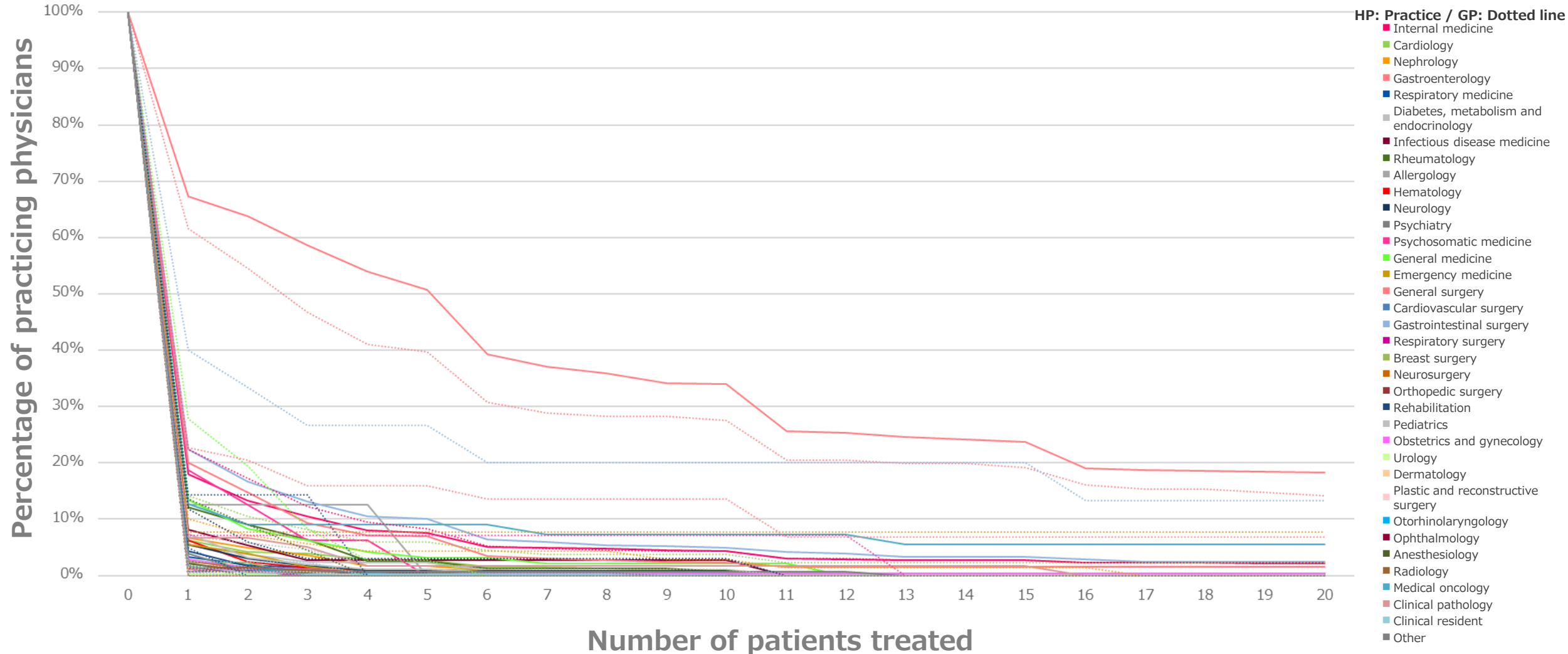
	n=	0	1~4	5~9	10~14	15~19	20~24	25~29	30~49	more than 50
GP All	n=2974	87%	7%	2%	1%	1%	1%	0%	0%	0%
GP Internal medicine	n=936	78%	14%	4%	2%	1%	1%	0%	1%	1%
GP Cardiology	n=134	86%	8%	2%	1%	0%	1%	0%	1%	0%
GP nephrology	n=70	90%	6%	1%	1%	1%	0%	0%	0%	0%
GP Gastroenterology	n=156	38%	22%	12%	8%	5%	8%	1%	2%	3%
GP Respiratory medicine	n=61	95%	5%	0%	0%	0%	0%	0%	0%	0%
GP Diabetes, Metabolism and Endocrinology	n=86	93%	5%	1%	1%	0%	0%	0%	0%	0%
GP Infectious disease medicine	n=2	100%	0%	0%	0%	0%	0%	0%	0%	0%
GP Rheumatology	n=22	86%	14%	0%	0%	0%	0%	0%	0%	0%
GP Allergology	n=4	100%	0%	0%	0%	0%	0%	0%	0%	0%
GP Hematology	n=4	100%	0%	0%	0%	0%	0%	0%	0%	0%
GP Neurology	n=34	88%	9%	0%	3%	0%	0%	0%	0%	0%
GP Psychiatry	n=181	98%	1%	1%	0%	0%	0%	0%	0%	0%
GP Psychosomatic medicine	n=14	93%	0%	0%	7%	0%	0%	0%	0%	0%
GP General medicine	n=36	72%	25%	3%	0%	0%	0%	0%	0%	0%
GP Emergency	n=13	92%	0%	0%	0%	0%	8%	0%	0%	0%
GP General surgery	n=44	77%	7%	2%	7%	0%	5%	0%	0%	2%
GP Cardiovascular surgery	n=7	100%	0%	0%	0%	0%	0%	0%	0%	0%
GP Gastrointestinal surgery	n=15	60%	13%	7%	0%	7%	0%	0%	7%	7%
GP Respiratory surgery	n=2	100%	0%	0%	0%	0%	0%	0%	0%	0%
GP Breast surgery	n=13	100%	0%	0%	0%	0%	0%	0%	0%	0%
GP Neurosurgery	n=24	100%	0%	0%	0%	0%	0%	0%	0%	0%
GP Orthopaedic surgery	n=158	99%	1%	0%	0%	0%	0%	0%	0%	0%
GP Rehabilitation	n=7	86%	14%	0%	0%	0%	0%	0%	0%	0%
GP Pediatrics	n=180	99%	1%	0%	0%	0%	0%	0%	0%	0%
GP Obstetrics and gynecology	n=92	99%	1%	0%	0%	0%	0%	0%	0%	0%
GP Urology	n=70	99%	1%	0%	0%	0%	0%	0%	0%	0%
GP Dermatology	n=168	99%	1%	0%	0%	0%	0%	0%	0%	0%
GP Plastic and reconstructive surgery	n=37	100%	0%	0%	0%	0%	0%	0%	0%	0%
GP Otorhinolaryngology	n=110	100%	0%	0%	0%	0%	0%	0%	0%	0%
GP Ophthalmology	n=140	100%	0%	0%	0%	0%	0%	0%	0%	0%
GP Anesthesiology	n=31	100%	0%	0%	0%	0%	0%	0%	0%	0%
GP Radiology	n=19	100%	0%	0%	0%	0%	0%	0%	0%	0%
GP Medical oncology	n=1	100%	0%	0%	0%	0%	0%	0%	0%	0%
GP Clinical pathology	n=1	100%	0%	0%	0%	0%	0%	0%	0%	0%
GP Clinical resident	n=42	98%	2%	0%	0%	0%	0%	0%	0%	0%
GP Others	n=60	98%	2%	0%	0%	0%	0%	0%	0%	0%

[Ulcerative Colitis] Percentage of Practicing Physicians (Cumulative Ratio)

(Sample version)

The percentage of physicians treating equal to or more than the number of patients on the "horizontal axis (number of patients treated)" is shown by HP/GP specialty.

What the graph represents:
The percentage of physicians treating "equal to or more than 0" patients is set as "100%," and the percentage of practicing physicians gradually decreases as the number of patients increases.



Number of patients treated

[Ulcerative Colitis] Share of Number of Patients (Cumulative Ratio)

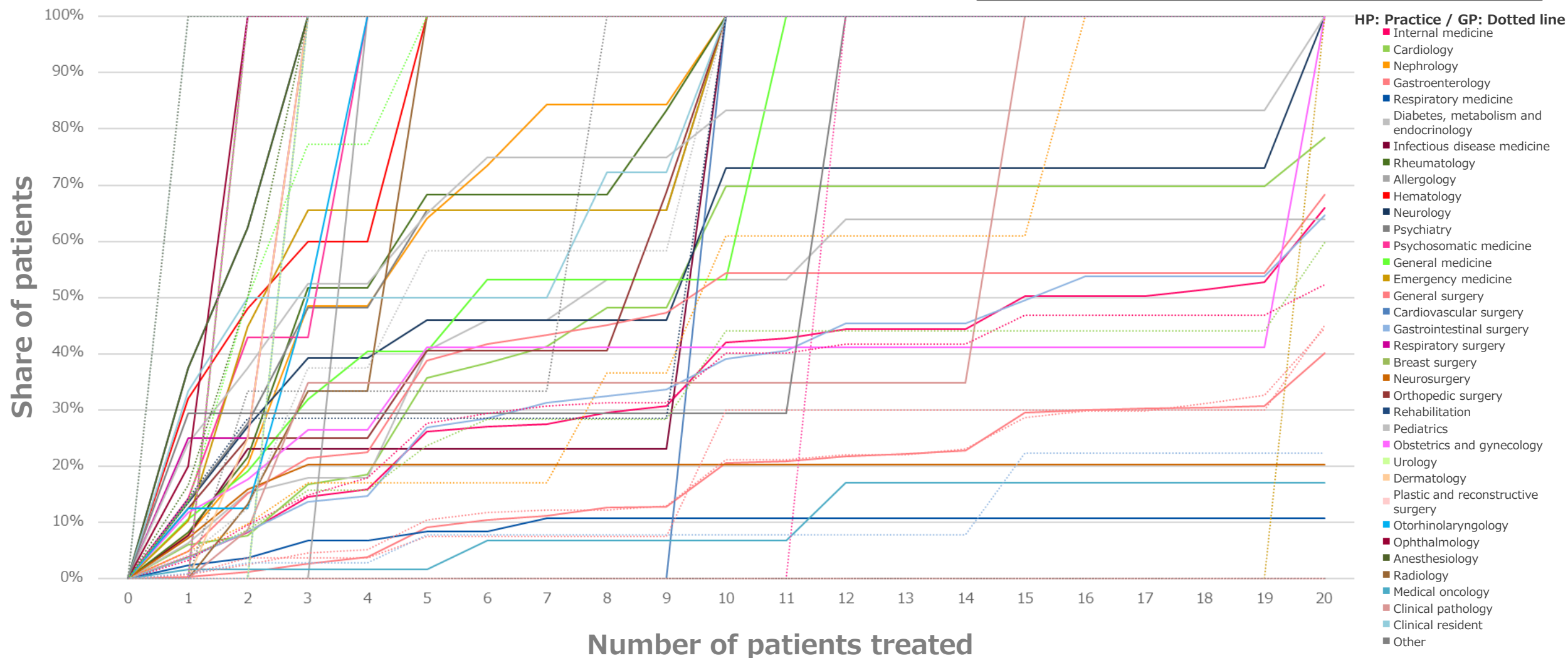
The chart shows the share of the total number of patients treated by physicians who treat equal to or more than the number of patients on the "horizontal axis (number of patients treated)" out of the total number of patients treated by all physicians by HP/GP specialty.

What the graph represents:

The percentage of physicians treating "equal to or more than 1" patient is set as "100%," and the share of patients gradually decreases if it is limited to physicians treating a large number of patients.

※ Legends and graphs are color-coded by area.

※ Graphs are prepared by disease and procedure.



[Ulcerative Colitis] Relationship between Total Number of Patients Treated and Disease [HP Internal Medicine Sample]

The relationship between the number of patients treated for "ulcerative colitis" and "disease/procedure group" are shown.

The tabulation method is subject to change.

Ulcerative colitis

Calculation procedure

[Step 1]

All diseases and procedures/ techniques other than the "title disease" were categorized using principal component analysis.

※ Advanced recurrent cancer was excluded.

※ "Principal Component Score" on the right shows the magnitude of contribution to each principal component.

[Step 2]

Multiple regression analysis was used to determine the association using "title disease" as the objective variable and "Top 7 principal components" as the explanatory variable.

※ "Standard Partial Regression Coefficient" on the right shows the degree of association between the objective variable and each principal component.

Disease/procedure group

Factor 1

Cardiovascular disorder

Factor 2

Age-related disease

Factor 3

Liver disease

Factor 4

Blood cancer

Factor 5

Mental disorder

Factor 6

Intractable and rare disease

Factor 7.

Cancer

Standard partial regression coefficient

0.457

0.147

0.084

0.072

0.039

0.012

-0.054

Factor 1

Acute heart failure	0.338
Ventricular arrhythmia	0.295
Uterine fibroids	0.294
Cataract	0.276
Dementia	0.265
Schizophrenia	0.264
Depression	0.256

Factor 3

Hepatitis B	0.349
Cirrhosis	0.342
Compensated cirrhosis due to hepatitis C virus	0.337
EVT/PPI	0.316
Pulmonary arterial hypertension (PAH)	0.306
Hyperparathyroidism	0.298
Ventricular arrhythmia	0.270

Factor 5

Depression	0.564
Adult ADHD	0.549
Schizophrenia	0.534
Bipolar disorder	0.485
Dysmenorrhea	0.471
alcohol dependence	0.469
Pediatric ADHD	0.443

Factor 7.

Catheter Ablation	0.328
TAVI/TAVR	0.295
Stomach cancer	0.266
Non-small cell lung cancer	0.265
Colorectal cancer (CRC)	0.265
Hepatocellular carcinoma (HCC)	0.245
COPD	0.237

PCS

Factor 2

Sleep disorders (insomnia)	0.732
Constipation	0.720
Hypertension	0.720
Benign prostatic hyperplasia (BPH)	0.717
Low back pain	0.713
Overactive bladder (OAB)	0.704
Hypercholesterolemia	0.694

Factor 4

Malignant lymphoma	0.575
Non-Hodgkin's lymphoma	0.563
Multiple myeloma	0.527
Non-small cell lung cancer	0.510
Diffuse large B-cell lymphoma	0.501
Breast cancer	0.493
Peripheral T-cell lymphoma	0.410

Factor 6

Hemophilia B	0.941
Gaucher's disease	0.933
Chronic lymphocytic leukemia	0.924
Tuberous sclerosis	0.923
Malignant rheumatoid arthritis	0.919
AHFXIII/13	0.913
Cushing's disease	0.912

option

[Ulcerative Colitis] Relationship between Number of Patients Treated and Number of Patients with Disease [HP Internal Medicine Sample]

The relationship between the number of patients treated for "ulcerative colitis" and "all diseases and procedures" other than "ulcerative colitis" are shown.

The tabulation method is subject to change.

*Display of top 75 diseases and procedures with single correlation

	% of practicing physicians	Average		Standard Deviation	Standard Partial Regression Coefficient	Single correlation
Ulcerative colitis	17.9%	1.2	Person/3 m	4.5	-	-
Stomach cancer	22.1%	1.1	Person/3 m	3.8	0.026	0.523
Colorectal cancer (CRC)	25.0%	1.3	Person/3 m	4.9	0.114	0.503
Eosinophilic gastrointestinal disorders	3.0%	0.1	Person/yea	1.3	0.289	0.481
Crohn's disease	10.1%	0.7	Person/yea	4.3	0.412	0.479
Colonoscopy	17.5%	15.2	Person/yea	69.4	0.149	0.477
Upper endoscopy	29.4%	50.0	Person/yea	199.6	0.151	0.471
Irritable bowel syndrome	33.5%	2.8	Person/mor	8.5	0.114	0.429
Cirrhosis	28.2%	1.8	Person/3 m	5.7	0.138	0.420
IgG4 related disease	10.8%	0.3	Person/yea	1.9	0.164	0.380
alcohol dependence	13.1%	0.6	Person/3 m	3.1	0.111	0.379
Migraine	36.0%	2.5	Person/mor	7.8	-0.038	0.374
Herpes zoster	29.3%	1.1	Person/3 m	3.6	0.035	0.367
Esophageal cancer	8.5%	0.4	Person/3 m	2.4	0.231	0.362
Allergic rhinitis	47.0%	5.6	Person/mor	14.6	-0.004	0.360
Pancreatic cancer	8.4%	0.3	Person/3 m	1.6	-0.064	0.355
Compensated cirrhosis due to hepatitis C virus	10.2%	0.6	Person/yea	3.2	-0.029	0.352
Atopic dermatitis	16.5%	1.6	Person/3 m	8.6	0.003	0.352
Gallbladder cancer	5.5%	0.2	Person/3 m	1.4	0.022	0.345
Aplastic anemia	3.4%	0.1	Person/3 m	1.3	-0.084	0.343
Chronic myeloid leukemia	3.9%	0.2	Person/3 m	1.9	0.054	0.327
Prostate cancer	16.3%	0.7	Person/3 m	2.8	-0.029	0.325
Chronic lymphocytic leukemia	2.2%	0.1	Person/3 m	2.0	0.001	0.324
Hepatocellular carcinoma (HCC)	11.3%	0.5	Person/3 m	2.6	0.039	0.323
Myelodysplastic syndrome	8.9%	0.3	Person/3 m	1.9	-0.003	0.322
Pulmonary arterial hypertension (PAH)	6.5%	0.4	Person/3 m	2.7	0.033	0.319
Overactive bladder (OAB)	40.9%	4.4	Person/mor	12.6	0.001	0.317
Hodgkin lymphoma	2.2%	0.1	Person/3 m	1.4	-0.148	0.316
Acute lymphocytic leukemia	2.2%	0.2	Person/3 m	1.8	0.356	0.315
Hay fever	36.8%	4.9	Person/mor	15.1	0.014	0.312
Hepatitis B	18.1%	1.5	Person/3 m	6.8	-0.111	0.312
Malignant rheumatoid arthritis	2.6%	0.1	Person/yea	1.9	0.210	0.308
Benign prostatic hyperplasia (BPH)	43.6%	4.8	Person/mor	11.7	0.006	0.307
Arteriosclerosis obliterans (ASO)	24.5%	2.2	Person/3 m	7.7	0.007	0.302
Multiple myeloma	6.3%	0.3	Person/3 m	2.2	0.134	0.300
Cushing's disease	2.5%	0.1	Person/yea	1.2	-0.121	0.300
Reflux esophagitis	65.0%	14.5	Person/mor	30.6	0.077	0.300
Pulmonary tuberculosis	11.6%	0.3	Person/yea	1.6	-0.006	0.300

Calculation procedure

Multiple regression analysis was used to determine the association between "number of patients treated" as the objective variable and "all diseases and procedures" as the explanatory variable.

- ※ Advanced recurrent cancer was excluded.
- ※ The "standard partial regression coefficient" shows the degree of association between the objective variable and the explanatory variable.

option

	% of practicing physicians	Average		Standard Deviation	Standard Partial Regression Coefficient	Single correlation
MSI-H cancer	0.8%	0.0	Person/3 m	0.7	0.151	0.298
Hepatitis C	21.0%	1.7	Person/3 m	8.1	0.034	0.297
Headache	43.0%	4.6	Person/mor	12.5	0.005	0.296
Peripheral T-cell lymphoma	1.8%	0.1	Person/3 m	1.0	-0.030	0.296
Kidney cancer	6.1%	0.2	Person/3 m	2.3	0.007	0.295
Non-alcoholic steatohepatitis (NASH)	26.0%	2.8	Person/mor	12.2	0.042	0.295
Psoriasis	7.0%	0.5	Person/3 m	4.3	0.063	0.293
Multiple sclerosis (MS)	4.6%	0.3	Person/3 m	2.6	-0.040	0.291
Type 1 diabetes	21.8%	1.4	Person/mor	5.0	0.071	0.290
Acute kidney injury	17.8%	1.0	Person/3 m	4.0	-0.008	0.289
Parkinson's disease	34.0%	2.7	Person/3 m	9.0	0.027	0.287
Peritoneal dialysis	3.2%	0.3	Person/3 m	3.7	0.113	0.287
Hypoparathyroidism	3.2%	0.2	Person/yea	1.7	0.071	0.283
Acute myeloid leukemia	2.7%	0.2	Person/3 m	2.1	-0.380	0.283
Endometriosis	2.7%	0.2	Person/mor	2.6	-0.158	0.282
Hemophilia B	1.7%	0.1	Person/yea	1.2	-0.188	0.281
Granulomatosis with polyangiitis	4.4%	0.2	Person/yea	1.4	-0.207	0.281
Tuberous sclerosis	1.9%	0.1	Person/yea	0.9	0.110	0.279
Behcet's disease	5.5%	0.3	Person/yea	1.7	0.157	0.278
Pressure ulcer	32.3%	1.9	Person/mor	5.2	0.029	0.276
Cardiac Amyloidosis	3.7%	0.1	Person/yea	1.5	0.026	0.273
Pollakiuria	36.4%	4.5	Person/mor	13.6	0.071	0.272
Cancer pain	8.1%	0.8	Person/3 m	5.4	0.110	0.270
Gout/Hyperuricemia	58.6%	12.3	Person/mor	24.8	-0.003	0.268
Anemia	59.1%	7.3	Person/mor	13.7	-0.047	0.268
Onychomycosis	24.8%	2.0	Person/3 m	8.0	-0.019	0.267
Vascular dementia	29.6%	3.5	Person/3 m	10.6	-0.055	0.267
Vitamin D-dependent rickets	1.2%	0.0	Person/yea	0.8	0.119	0.266
Cardiac arrhythmia	49.6%	6.8	Person/mor	16.6	0.028	0.265
Skin cancer	2.3%	0.1	Person/3 m	1.6	-0.137	0.264
Non-small cell lung cancer	18.8%	1.2	Person/3 m	5.5	0.044	0.260
CIDP	1.9%	0.1	Person/yea	0.9	0.072	0.258
Myelofibrosis	2.3%	0.1	Person/yea	0.9	0.034	0.257
Malignant pleural mesothelioma	3.7%	0.1	Person/3 m	0.9	0.000	0.256
Bronchial asthma	64.2%	7.5	Person/mor	16.4	0.067	0.255
COPD	64.8%	7.5	Person/mor	15.8	-0.187	0.255
Ovarian cancer	2.5%	0.1	Person/3 m	1.6	-0.023	0.251
Ankylosing Spondylitis	2.0%	0.1	Person/yea	1.9	0.318	0.249

Distribution of Number of Patients[Ulcerative Colitis] x Other Diseases

[HP Internal Medicine Sample]

(Sample version)

The tables show the percentage of physicians by the number of patients treated for each disease by the number of patients treated for "ulcerative colitis."

What the number table represents:
The number of physicians is calculated by the number of patients with "other diseases," by the number of physicians treating the number of patients with the "title specialty."

option

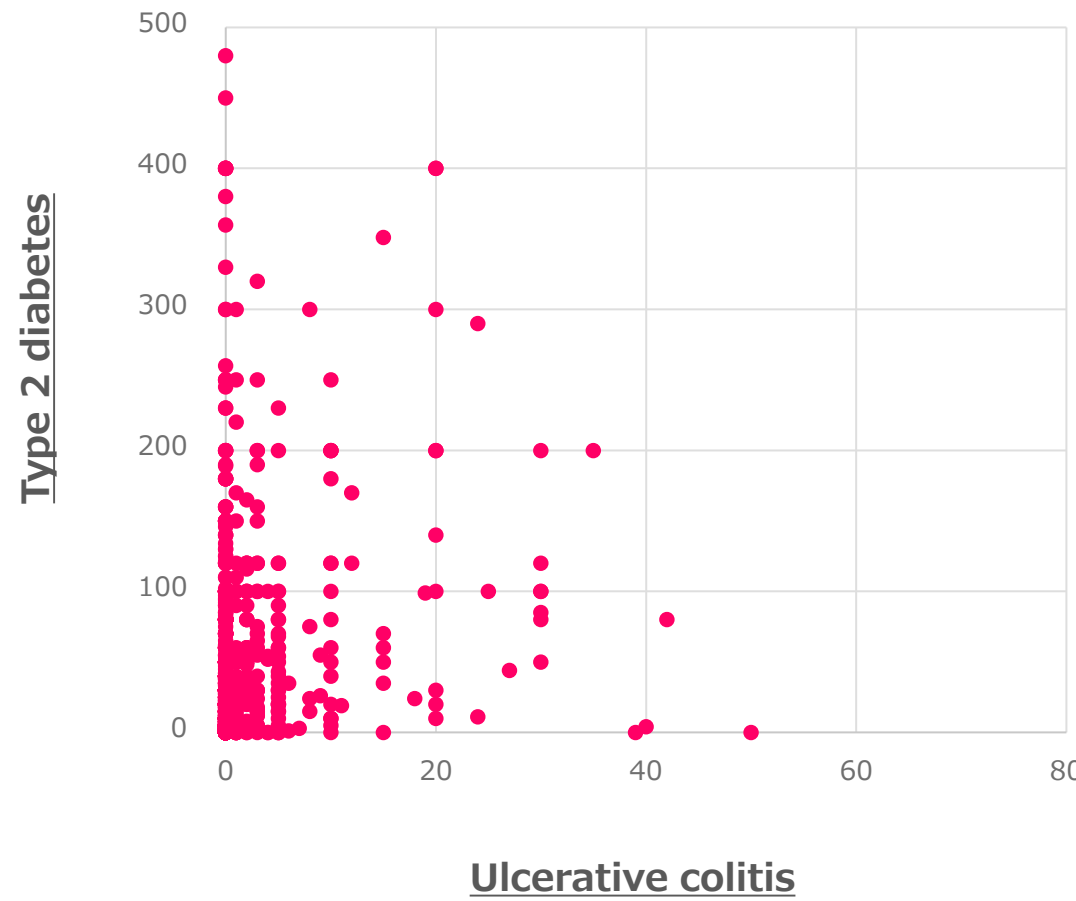
n=1243		(Percentage of responding physicians)								
(Example) Type 2 diabetes										
	n=	0	1~9	10~19	20~29	30~49	50~69	70~99	100~199	more than 200
Ulcerative colitis	n=1243	20%	20%	13%	10%	11%	7%	6%	9%	4%
0	n=1020	23%	22%	14%	10%	11%	6%	5%	7%	2%
1~4	n=129	9%	19%	9%	9%	12%	12%	5%	18%	6%
5~9	n=40	8%	8%	10%	15%	15%	15%	13%	10%	8%
10~14	n=20	5%	5%	15%	5%	5%	10%	5%	30%	20%
15~19	n=8	13%	0%	0%	13%	13%	25%	25%	0%	13%
20~24	n=12	0%	0%	17%	8%	8%	0%	0%	17%	50%
25~29	n=2	0%	0%	0%	0%	50%	0%	0%	50%	0%
30~49	n=11	9%	9%	0%	0%	0%	9%	27%	27%	18%
more than 50	n=1	100%	0%	0%	0%	0%	0%	0%	0%	0%

		(Percentage of responding physicians)								
(Example) Colorectal cancer										
	n=	0	1~4	5~9	10~14	15~19	20~24	25~29	30~49	more than 50
Ulcerative colitis	n=1243	75%	17%	4%	2%	0%	1%	0%	1%	0%
0	n=1020	83%	13%	2%	1%	0%	0%	0%	0%	0%
1~4	n=129	54%	35%	8%	3%	0%	0%	0%	0%	0%
5~9	n=40	38%	38%	13%	10%	0%	0%	0%	3%	0%
10~14	n=20	10%	45%	20%	20%	0%	5%	0%	0%	0%
15~19	n=8	13%	0%	25%	13%	13%	38%	0%	0%	0%
20~24	n=12	8%	17%	50%	0%	0%	8%	8%	8%	0%
25~29	n=2	0%	50%	0%	0%	0%	0%	0%	50%	0%
30~49	n=11	0%	18%	27%	18%	0%	9%	0%	9%	18%
more than 50	n=1	0%	0%	0%	0%	100%	0%	0%	0%	0%

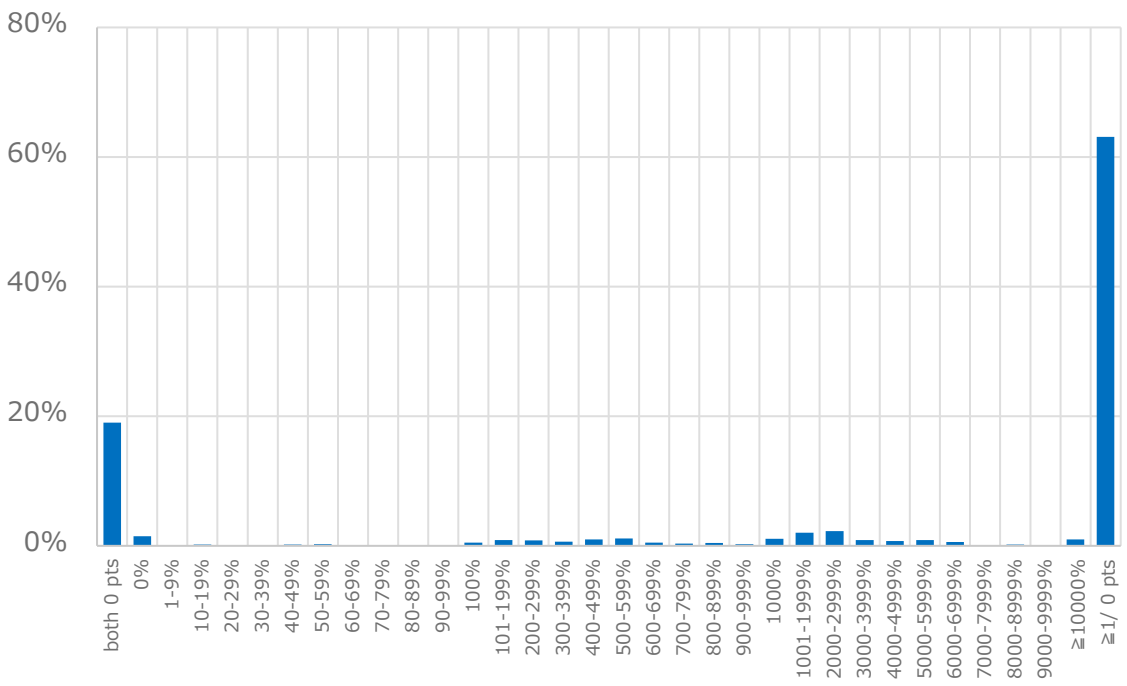


n=1243

(Number of patients: pts)



(Percentage of patients)



Ratio of the number of patients with Type 2 diabetes / the number of patients with ulcerative colitis

[Ulcerative Colitis] Percentage of Treated/Potential Patients from the Disease

Monitor

Based on the results of the Disease Monitor, the percentage of responses are shown by sex and age.

Disease Monitor (Patient survey)

(Percentage of responses)

Age	n=	No doctor visit despite of clinical attention/suspicion in medical checkup and other settings	Currently being treated in a medical institution	Doctor visit within 1 year for treatment	Doctor visit within 2 years for treatment	Doctor visit prior to 2 years for treatment	This disease is not my problem/ (None)	Don't know
15~19	n=3426	0%	0%	0%	0%	0%	8%	91%
20~24	n=6774	0%	0%	0%	0%	0%	10%	89%
25~29	n=9619	0%	0%	0%	0%	0%	11%	88%
30~34	n=15895	0%	0%	0%	0%	0%	13%	87%
35~39	n=21211	0%	0%	0%	0%	0%	13%	86%
40~44	n=29974	0%	0%	0%	0%	0%	15%	84%
45~49	n=45377	0%	0%	0%	0%	0%	16%	84%
50~54	n=53671	0%	0%	0%	0%	0%	17%	83%
55~59	n=48674	0%	0%	0%	0%	0%	18%	81%
60~64	n=38728	0%	0%	0%	0%	0%	19%	80%
65~69	n=25841	0%	0%	0%	0%	0%	21%	78%
70~74	n=17568	0%	0%	0%	0%	0%	21%	78%
75~79	n=6102	0%	0%	0%	0%	0%	22%	77%
80~84	n=2592	0%	0%	0%	0%	0%	24%	76%
85~89	n=633	0%	0%	0%	0%	1%	22%	77%

Male

What the number table represents:

The percentage of respondents who are aware of the "title disease" in the Disease monitor (patient survey) and their doctor visit are shown.

(Percentage of responses)

Age	n=	No doctor visit despite of clinical attention/suspicion in medical checkup and other settings	Currently being treated in a medical institution	Doctor visit within 1 year for treatment	Doctor visit within 2 years for treatment	Doctor visit prior to 2 years for treatment	This disease is not my problem/ (None)	Don't know
15~19	n=12321	0%	0%	0%	0%	0%	10%	89%
20~24	n=24178	0%	0%	0%	0%	0%	19%	80%
25~29	n=35912	0%	0%	0%	0%	0%	23%	77%
30~34	n=42321	0%	0%	0%	0%	0%	24%	75%
35~39	n=40613	0%	0%	0%	0%	0%	26%	74%
40~44	n=38580	0%	0%	0%	0%	0%	27%	72%
45~49	n=42673	0%	0%	0%	0%	0%	27%	72%
50~54	n=38761	0%	0%	0%	0%	0%	28%	71%
55~59	n=27986	0%	0%	0%	0%	0%	30%	69%
60~64	n=17740	0%	0%	0%	0%	0%	30%	69%
65~69	n=9754	0%	0%	0%	0%	0%	29%	71%
70~74	n=6301	0%	0%	0%	0%	0%	29%	70%
75~79	n=2062	0%	0%	0%	0%	0%	29%	69%
80~84	n=788	0%	0%	0%	0%	0%	24%	75%
85~89	n=234	0%	0%	0%	0%	0%	25%	74%

Female

[Ulcerative Colitis] Number of Treated/Potential Patients from the Disease Monitor

(Weighted Tabulation)

(Sample version)

The table shows the weighted number of patients multiplied the results of the Disease Monitor by the sex-and-age specific weighted population.

Disease Monitor (Patient survey)

Calculation procedure

Weighted tabulation is calculated by multiplying sex and age-specific results by population (Ministry of Internal Affairs and Communications).

The number of persons in each age group is the sum of the weighted tabulations for "male" and "female"; "total" is the sum of the weighted tabulations for each sex and age group.

(Percentage of responses)

	Population	No doctor visit despite of clinical attention/suspicion in medical checkup and other settings	Currently being treated in a medical institution	Doctor visit within 1 year for treatment	Doctor visit within 2 years for treatment	Doctor visit prior to 2 years for treatment	This disease is not my problem/ (None)	Don't know
Overall	107,911,600 100%	198,000 0%	284,000 0%	54,000 0%	31,000 0%	230,000 0%	23,054,000 21%	84,058,000 78%
15~19	5,550,000 100%	13,000 0%	6,000 0%	4,000 0%	1,000 0%	2,000 0%	510,000 9%	5,014,000 90%
20~24	6,250,000 100%	13,000 0%	14,000 0%	3,000 0%	1,000 0%	4,000 0%	920,000 15%	5,296,000 85%
25~29	6,390,000 100%	11,000 0%	13,000 0%	4,000 0%	2,000 0%	6,000 0%	1,078,000 17%	5,276,000 83%
30~34	6,490,000 100%	11,000 0%	15,000 0%	4,000 0%	1,000 0%	7,000 0%	1,191,000 18%	5,261,000 81%
35~39	7,300,000 100%	11,000 0%	21,000 0%	2,000 0%	2,000 0%	9,000 0%	1,408,000 19%	5,848,000 80%
40~44	8,060,000 100%	14,000 0%	28,000 0%	3,000 0%	2,000 0%	13,000 0%	1,681,000 21%	6,318,000 78%
45~49	9,580,000 100%	15,000 0%	33,000 0%	4,000 0%	2,000 0%	20,000 0%	2,037,000 21%	7,470,000 78%
50~54	9,350,000 100%	17,000 0%	30,000 0%	3,000 0%	3,000 0%	23,000 0%	2,070,000 22%	7,203,000 77%
55~59	7,900,000 100%	16,000 0%	22,000 0%	4,000 0%	2,000 0%	23,000 0%	1,912,000 24%	5,920,000 75%
60~64	7,400,000 100%	11,000 0%	23,000 0%	4,000 0%	3,000 0%	22,000 0%	1,830,000 25%	5,508,000 74%
65~69	7,670,000 100%	12,000 0%	23,000 0%	2,000 0%	3,000 0%	18,000 0%	1,903,000 25%	5,709,000 74%
70~74	9,560,000 100%	20,000 0%	29,000 0%	6,000 0%	4,000 0%	31,000 0%	2,428,000 25%	7,042,000 74%
75~79	6,790,000 100%	19,000 0%	19,000 0%	7,000 0%	4,000 0%	20,000 0%	1,786,000 26%	4,934,000 73%
80~84	5,690,000 100%	15,000 0%	6,000 0%	4,000 0%	1,000 0%	12,000 0%	1,358,000 24%	4,293,000 75%
85~89	3,930,000 100%	0 0%	2,000 0%	0 0%	0 0%	20,000 1%	942,000 24%	2,966,000 75%

	Data content	Price
Cross tabulation table <ul style="list-style-type: none"> Excel 	The following documents on all diseases and procedures/surgeries (approx. 200 types) by HP/GP specialty <ul style="list-style-type: none"> Distribution of number of patients (crosstabulation table) Percentage of practicing physicians, average number of patients, standard deviation 	※ Please contact us.
Basic package (Disease summary) <ul style="list-style-type: none"> PDF document Tabulation data (Excel) 	<ul style="list-style-type: none"> Summary of number of patients (weighted number of patients in Japan, number of patients by prefecture) Share of number of patients/physicians in specialty Percentage of practicing physicians and average number of patients [by specialty] Distribution of number of patients [by specialty] Percentage of practicing physicians (cumulative ratio) Share of patients (cumulative ratio) A1. Relationship between total number of patients treated and disease A2. Relationship between number of patients treated and number of patients with disease B1. Target disease x other diseases: Distribution of number of patients B2. Target disease x other diseases: Distribution of number of patients (scatter diagram) <p>Listed as an appendix for a survey using both "MCN gram" and "Disease Monitor" data</p> <p>Disease Monitor (patient survey) data by age group</p> <ul style="list-style-type: none"> Percentage of treated/potential patients calculated from the disease monitor Number of treated/potential patients calculated from the disease monitor (weighted tabulation) 	※ Please contact us. ※ The basic package includes one pattern of each "A" and "B." ※ Please contact us if you require only some of the basic data.
Optional documents <ul style="list-style-type: none"> PDF document Tabulation data (Excel) 	A1. Relationship between total number of patients treated and disease A2. Relationship between number of patients treated and number of patients with disease B1. Target disease x other diseases: Distribution of number of patients B2. Target disease x other diseases: Distribution of number of patients (scatter diagram)	※ We will provide an estimate based on the number of processes. Document unit A: 1 pattern B: 5 patterns (target disease x 5 diseases)
Raw data <ul style="list-style-type: none"> Excel 	<ul style="list-style-type: none"> Total number of patients treated and number of patients with target disease Physician type (cluster analysis) Attributes (specialty, management type, number of beds, specialists, age, facility location) 	※ Please contact us.

Build your Data Culture

For inquiries about the results of this survey, please contact:.

In charge of MCN gram, Macromill Care Net Inc.

MAIL: contact@macromillcarenet.jp

Contact form: <https://www.macromillcarenet.jp/form.php>



株式会社マクロミルケアネット